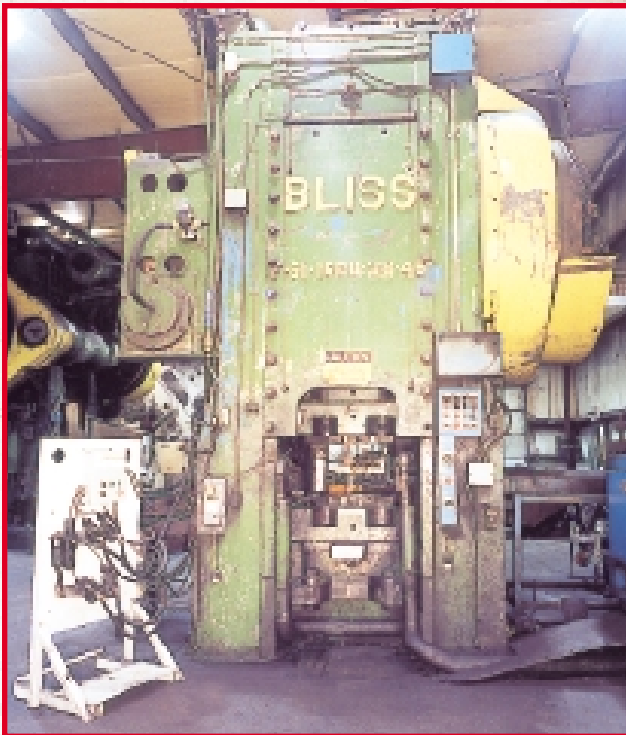


DoveBid Webcast & On-Location Auction

By order of the Secured Party, assets of
OGEMAW FORGE COMPANY
4747 S. M-76
West Branch, Michigan

MAJOR FORGING FACILITY
*Forging Presses & Hammers, Billet Heaters,
Furnaces & Toolroom Machinery*



The Auction

Thursday, May 10, 2001
Beginning at 10am

The Preview

Tuesday & Wednesday,
May 8 & 9, 2001
9am to 4pm and
morning of sale

DOVEBIDTM

Business Auctions Worldwide



www.industrialauctioneers.org

www.dovebid.com

DoveBid Webcast & On-Location Auction

The Auction

Thursday, May 10, 2001
Beginning at 10am

The Preview

Tuesday & Wednesday,
May 8 & 9, 2001
9am to 4pm and morning of the sale

The Location

(Auction & Preview)

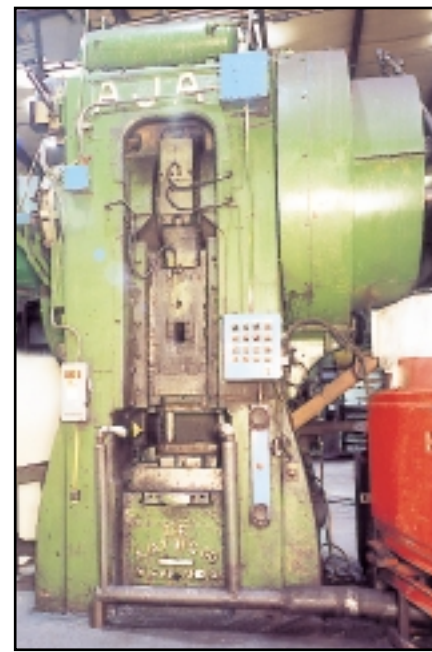
By order of the Secured Party, assets of
OGEMAW FORGE COMPANY
4747 S. M-76
West Branch, Michigan

Directions

From Detroit Area
Proceed on I-75 North to
M-33-Alger/Rose City Exit
(Exit 202). After exiting
expressway, bear right onto
M-33 and proceed 1/2 mile to
Maple Ridge Road. Turn left
(west) and proceed 2/10 mile
to stop sign (Old M-76). Turn
right (north) and proceed
4-1/2 miles to sale site on the
right side. Watch for auction
and parking signs.



1 OF 2 BLISS F-S1-1600-38-46 1600-TON SINGLE
CRANK STRAIGHT SIDE FORGING PRESSES



AJAX SIZE 1000 1000-TON SINGLE
CRANK S.S. FORGING PRESS

1600-TON STRAIGHT SIDE FORGING PRESSES

- 2 - BLISS F-S1-1600-38-46 1600-TON SINGLE CRANK STRAIGHT SIDE FORGING PRESSES, S/Ns N/A, (REBUILT 1997), C2283 (REBUILT 1998), Bed Size 38"FB X 46"LR, Stroke 12", Shut Height 30", Speeds 70 SPM, Air Clutch, Air Counterbalance, Air Cushion, Bed & Ram Knockouts, 100-HP AC Motor Drive (Rebuilt 1997), S/N C2283, With Lubrimation Die Lubrication System

STRAIGHT SIDE FORGING PRESS

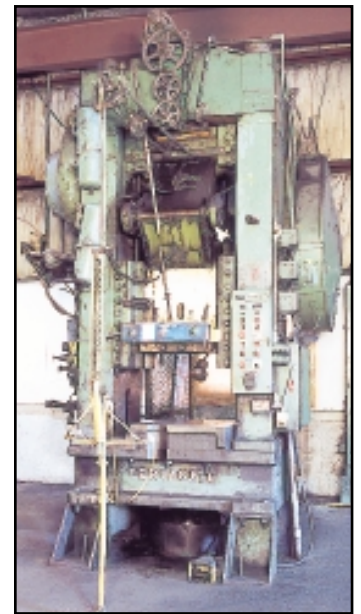
- 1 - AJAX SIZE 1000 1000-TON SINGLE CRANK STRAIGHT SIDE FORGING PRESS, S/N 3973, Bed Size 32"FB X 28"LR, Air Clutch, Knockouts, Palm Button Controls

KNUCKLE JOINT PRESSES

- 1 - MINSTER 90-400 400-TON KNUCKLE JOINT PRESS, S/N 90-400-4824, Bed Size 30"FB X 30"LR, Ram Size 21"FB X 25"LR, Stroke 8", Shut Height N/A, Slide Adjustment 1/2", Air Clutch, (2) Air Counterbalances, Pull-Back Safety Device, Palm Button & Foot-Pedal Controls, 3" & 5" Bolster Plates
- 1 - FERRACUTE S1-400-21-18 400-TON KNUCKLE JOINT PRESS, S/N 24442, Bed Size 32"FB X 34"LR, Ram Size 18-1/2"FB X 21-1/2"LR, Stroke 9", Shut Height 22", Slide Adjustment 1/2", Speeds 15 to 30 SPM, Motorized Ram Adjustment, Air Clutch, (2) Air Counterbalances, Pull-Back Safety Device, Palm Button & Foot-Pedal Controls, 6-1/2" Bolster Plate



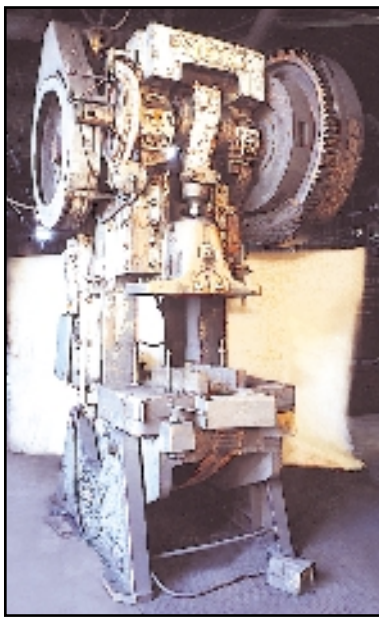
MINSTER 90-400 400-TON
KNUCKLE JOINT PRESS



FERRACUTE S1-400-21-18 400-TON
KNUCKLE JOINT PRESS



BLISS OBI-150 150-TON
GEARED OBI PRESS



FEDERAL F-10 125-TON
BACK-GEARED OBI PRESS



USI CLEARING 110-TON
OBI PRESS

STRAIGHT SIDE PRESSES

- 1 – MINSTER ST1-175-27-33 175-TON SINGLE CRANK STRAIGHT SIDE PRESS, S/N ST1-175-12822
- 1 – BLISS 160-TON SINGLE CRANK STRAIGHT SIDE PRESS, S/N H17980/00-HP698 (#4), Bed Size 42"FB X 27-1/2"LR, Ram Size 37"FB X 21"LR, Stroke 8", Air Clutch, (2) Air Counterbalances, Palm Button & Foot-Pedal Controls, Motorized Belt Conveyor, 2-1/2" Bolster Plate
- 1 – CLEVELAND 10S 90-TON SINGLE CRANK STRAIGHT SIDE PRESS, S/N 9021, Bed Size 24"FB X 22"LR, Ram Size 10"FB X 17-1/2"LR, Stroke 6", Shut Height 16", Slide Adjustment 3", Speeds 60 SPM, Air Clutch, Foot-Pedal Control, Motorized Belt Conveyor
- 1 – BLISS NO. 85-1/2 SINGLE CRANK STRAIGHT SIDE PRESS, S/N 30836-75374, Bed Size 21"FB X 24"LR, Ram Size 18"FB X 19-1/2"LR, Air Clutch
- 1 – BLISS NO. 304 SINGLE CRANK STRAIGHT SIDE PRESS, S/N N/A

(10) OBI PRESSES

- 1 – BLISS OBI-150 150-TON GEARED OBI PRESS, S/N H49669-H36276, Bed Size 30"FB X 50"LR, Ram Size 24"FB X 34"LR, Stroke 8", Shut Height 24", Slide Adjustment 4", Air Clutch, Hydraulic Parts Chute, Palm Button Control, 1" Bolster Plate
- 1 – CLEVELAND 13-1 150-TON GEARED OBI PRESS, S/N 9508-3 (#5), Bed Size 29"FB X 45"LR, Ram Size 20"FB X 18"LR, Stroke 8", Shut Height 22", Slide Adjustment 4", Speeds 35 SPM, (Gear Shaft Missing)
- 1 – FEDERAL F-10 125-TON BACK-GEARED OBI PRESS, S/N 10-255 (#3), Bed Size 28"FB X 39"LR, Ram Size 14"FB X 30"LR, Stroke 8", Speeds 45 SPM, Air Clutch, Foot-Pedal Control, Motorized Belt Conveyor, 4-1/2" Bolster Plate
- 1 – USI CLEARING 110-TON OBI PRESS, S/N 54-3296, Bed Size 30"FB X 38"LR, Ram Size 18"FB X 17"LR, Stroke 6", Shut Height 18-1/8", Slide Adjustment 5", Speeds 40 SPM, Air Clutch, (2) Air Counterbalances, Hydraulic Parts Chute, Palm Button & Foot-Pedal Controls, 4" Bolster Plate
- 1 – USI CLEARING 110 110-TON OBI PRESS, S/N 54-3068, Bed Size 30"FB X 39-1/2"LR, Ram Size 18"FB X 17"LR, Stroke 6", Shut Height 18-1/8", Slide Adjustment 5", Speeds 90 SPM, Air Clutch, (2) Air Counterbalances, Palm Button & Foot-Pedal Controls, Motorized Belt Conveyor, 4" Bolster Plate
- 1 – CLEVELAND 11-1 110-TON GEARED OBI PRESS, S/N 9424-3, Bed Size 26"FB X 38"LR, Ram Size 16"FB X 17"LR, Stroke 8", Shut Height 16", Slide Adjustment 4", Speeds 40 SPM, Air Clutch, Foot-Pedal Control, Motorized Belt Conveyor, 3" Bolster Plate
- 1 – USI CLEARING TORC-PAC 60 60-TON OBI PRESS, S/N 57-9136, Bed Size 21"FB X 32"LR, Ram Size 16"FB X 24"LR, Stroke 6", Shut Height 18", Slide Adjustment 3", Speeds 90 SPM, Air Clutch, (2) Air Counterbalances, Front-To-Back Crankshaft, Foot-Pedal Control, 2" Bolster Plate
- 1 – USI TORC-PAC 45 SERIES 45T640-277 45-TON NON-GEARED OBI PRESS, S/N 57-7253, Bed Size 18"FB X 28"LR, Ram Size 14"FB X 18"LR, Stroke 6", Shut Height 18", Slide Adjustment 2-1/2", Air Clutch, (2) Air Counterbalances, Front-To-Back Crankshaft, Pull-Back Safety Device, Palm Button & Foot-Pedal Controls, 4" Bolster Plate
- 1 – ROUSSELLE/SERVICE MACHINE DOUBLE CRANK BACK-GEARED OBI PRESS, S/N N/A
- 1 – BLISS 21S-M NON-GEARED OBI PRESS, S/N N/A

DOVEBID WEBCAST

Can't get to West Branch, Michigan? Now with DoveBid's Webcast technology anyone around the world can bid on this auction through the Internet. Go to **DoveBid.com**: Register up to the day before the sale and download the free software. Bid in Real time!

All you need is your computer, Internet access and a touch tone phone, to participate in this live auction.

With **Webcast** technology, you are virtually there on the factory floor. The action is live and you are bidding with the people in the room and around the world.

An image of each asset being sold will be displayed on your screen. You'll hear the auctioneer on your phone, "Going Once... Going Twice..." Press 1 on your keypad to raise your paddle. "Sold on the Web!"

Terms & Conditions

- Buyers are responsible for all shipping and rigging charges.
- All items are sold AS IS, WHERE IS AND WITH ALL FAULTS.
- DoveBid shall charge and collect from each successful bidder a 13% buyer's premium for each sale at the auction, in addition to the purchase price as bid. Purchasers who pay in the form of certified funds or wire transfer shall receive a discount from the buyer's premium equal to 3% of the purchase price (unless such purchasers bid over the Internet, in which case the discount shall be equal to 1% of the purchase price).
- Each successful bidder must pay a 25% deposit toward the purchase price immediately following the successful bid.
- Applicable taxes will be added to the purchase price of all taxable items.
- Acceptable means of payment include certified funds, wire transfers, Visa, American Express and Mastercard.
- The complete terms and conditions that govern this auction will be distributed at the auction site and/or are available on our website at **www.DoveBid.com**. The complete terms and conditions may include terms that are unique to this particular auction. Please read them carefully before you bid in the auction. If you participate in the auction, you will be deemed to have read and consented to all of the terms and conditions.

DoveBid Webcast Auction

- Bid live in West Branch, MI
- Bid live over the internet at www.dovebid.com

**DoveBid, the leader
in Webcast Auctions**

See us on the web  www.dovebid.com



1 OF 2 CHAMBERSBURG CECO-DROP 40-CDE
4000-LB. CAPACITY AIR DROP HAMMERS



1 OF 2 CHAMBERSBURG CECO-DROP
3000-LB. CAPACITY AIR DROP HAMMERS



CHAMBERSBURG CECO-DROP
2000-LB. CAPACITY AIR DROP HAMMER

DROP HAMMERS

- 2 - CHAMBERSBURG CECO-DROP MODEL 40-CDE 4000-LB. CAPACITY AIR DROP HAMMERS, S/Ns N/A (#4), 2770-L9 (#3), Sow Block Size 34"FB X 22"LR, Ram Size 28"FB X 25"LR, Distance Between Guides 25"
- 2 - CHAMBERSBURG CECO-DROP 3000-LB. CAPACITY AIR DROP HAMMERS, S/Ns N/A, Sow Block Size 30"FB X 20-1/2"LR, Ram Size 23"FB X 25-1/2"LR, Distance Between Guides 23-1/2"
- 1 - CHAMBERSBURG CECO-DROP 2000-LB. CAPACITY AIR DROP HAMMER, S/N N/A (#1) (REBUILT 1991), Sow Block Size 26"FB X 16-1/2"LR, Ram Size 20"FB X 20-1/2"LR, Distance Between Guides 19"

DROP HAMMER PARTS

QUANTITY OF CHAMBERSBURG CECO-DROP DROP HAMMER SPARE & REPLACEMENT PARTS, Including: 4000-Lb: Columns, Frames, Guides, Sows; 3000-Lb: Columns, Frames, Guides, Ram, Sows; 2000-Lb: Frames, Guides, Rams, Sow

INDUCTION BILLET HEATERS

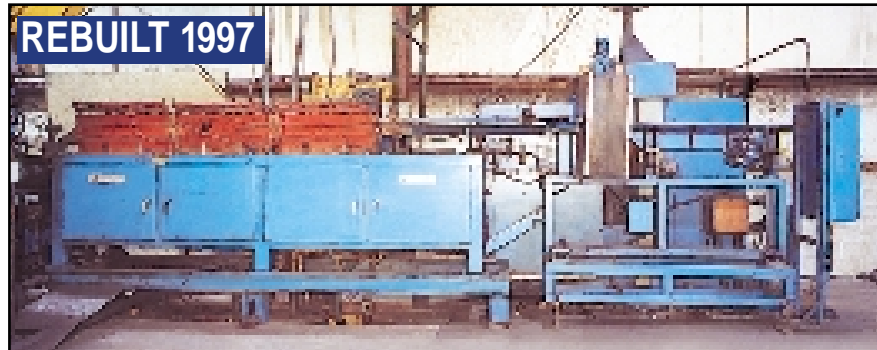
- 1 - AMERICAN INDUCTION HEATING 600-KW CONVEYORIZED INDUCTION BILLET HEATING SYSTEM, (REBUILT 1996-97), With Tech Induction Induction Heating Unit, S/N N/A, Opening Size 4" X 4", Length 72", Iron Mirage Digital Control, Allen-Bradley Digital Speed Control, Billet Loader
- 1 - INDUSTRIAL HEATING SYSTEMS 800-KW 3-ZONE CONVEYORIZED INDUCTION BILLET HEATING SYSTEM, S/N N/A (REBUILT 1997), With Induction Heating Unit, Opening Size 4" X 4", Length 9", Lepel/PPS Control, Allen-Bradley Digital Speed Control, Billet Loader
- 1 - CONVEYORIZED INDUCTION BILLET HEATING SYSTEM, With Induction Heating Unit, Opening Size 3" X 3", Length 72", Allen-Bradley Digital Speed Control, Iron Modline Automatic Optical Pyrometer, Billet Loader

SLOT FORGING FURNACES

- 1 - ARMIL C.F.S. SINGLE-DOOR GAS-FIRED SLOT FURNACE, S/N 6375 (8/2000 - NEW, NEVER USED), Chamber Size 121"W X 36"D X 6"H, (3) 36"W X 6"H Slots, Maximum Temperature 2400° F, BTU Input 6 MMBTU/Hr
- 5 - FRANKLIN GAS-FIRED SLOT FURNACES, S/Ns N/A, (#3) Chamber Size Approximately 168"W X 42"D X 6"H, (5) 26"W X 6"H Slots, Barber-Colman 560 Digital Temperature Controller, (#5) Chamber Size Approximately 140"W X 60"D X 6"H, (4) 21"W X 6"H Slots, Barber-Colman 560 Digital Temperature Controller, (#2) Chamber Size Approximately 102"W X 48"D X 6"H, (3) 30"W X 6"H Slots, Eclipse EMC 560 Digital Temperature Controller, (#4) Chamber Size Approximately 96"W X 42"D X 6"H, (3) 26"W X 6"H Slots, Eclipse EMC 560 Digital Temperature Controller, (#1) Chamber Size Approximately 66"W X 48"D X 6"H, (3) 30"W X 6"H Slots, Eclipse EMC 560 Digital Temperature Controller



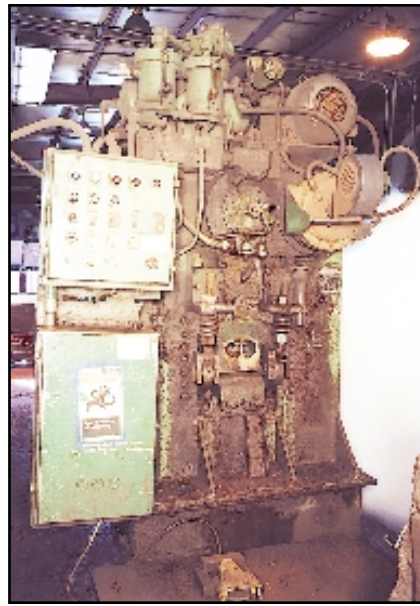
AMERICAN INDUCTION HEATING 600-KW
CONVEYORIZED INDUCTION BILLET HEATING SYSTEM



INDUSTRIAL HEATING SYSTEMS 800-KW 3-ZONE CONVEYORIZED
INDUCTION BILLET HEATING SYSTEM



VALDARNO MODEL FRANGAR-130/EP SEMI-AUTOMATIC MECHANICAL BILLET SHEAR



BUFFALO FORGE MODEL 150 MECHANICAL BILLET SHEAR

Web Affiliates:



AssetsB2B.com



Surplus Center



Webcentric

FURNACES

- 1 – **ELECTRA PRODUCTS MODEL 182538 SINGLE-DOOR ELECTRIC BOX FURNACE**, S/N 0954, Chamber Size 26"W X 40"D X 18"H, Maximum Temperature 2000°F
- 1 – **BLUE M MODEL 8650D-3 SINGLE-DOOR ELECTRIC FURNACE**, S/N FU2-2131, Chamber Size 10"W X 20"D X 10"H, Maximum Temperature 2000° F
- 1 – **GAS-FIRED BOX FURNACE**, Chamber Size 42"W X 42"D X 42"H, With Electric Chain Hoist, Chamber Raises for Access

BILLET SHEARS

- 1 – **VALDARNO MODEL FRANGAR-130/EP SEMI-AUTOMATIC MECHANICAL BILLET SHEAR**, S/N N/A, Capacity 630/700-Ton, Billet Capacity 5", Air Clutch, Hydraulic Stock Stop & Holddown, 18'L Automatic Billet Loader, With Bar Storage Rack & Inclined Chain-Type Feed Table, Motorized Incline Belt Conveyor, Control Console
- 1 – **HILL-ACME BILLET SHEAR**, S/N N/A, Opening Size 12" X 36", 20-HP Motor, With 30'L Bar Loader With 5-HP Motor & Hydraulic Loading Arm
- 1 – **BUFFALO FORGE MODEL 150 MECHANICAL BILLET SHEAR**, S/N 69-U-8282, Billet Capacity 1-1/2", Air Clutch, Hydraulic Stock Stop, Holddown, Inclined Billet Feed Table With Gravity Feed Rollers, Motorized Incline Belt Conveyor, Foot-Pedal Control

As a courtesy to our buyers, DoveBid can provide contact information for shipping companies that are scheduled to attend this auction. For details, please visit the DoveBid Website at www.dovebid.com or call our customer care department at 800-665-1042.

See us on the web
www.dovebid.com



CONVEYORIZED INDUCTION BILLET HEATING SYSTEM



8/2000 NEW, NEVER USED

ARNIL C.F.S. SINGLE-DOOR GAS-FIRED SLOT FURNACE

Now receive your appraisals
ONLINE via the internet
exclusively from DoveBid.

DOVEBID
Valuation Services



WHEELABRATOR SPINBLAST TUMBLAST MODEL 14 40 CU. FT. ABRASIVE BLAST MACHINE



ROBBINS & MYERS 5-TON CAPACITY DOUBLE-GIRDER TOP-RUNNING TRAVELLING BRIDGE CRANE

WHEELABRATOR

- 1 - **WHEELABRATOR SPINBLAST TUMBLAST 14 40 CU. FT. ABRASIVE BLAST MACHINE**, S/N A132138, Chamber Size 40" Diameter X 48"L, With 36" X 52" X 108" Parts Loader, Shaker/Unloader, Shot Elevator, Wheelabrator Dustube Dust Collector, S/N A132139

SURFACE GRINDERS

- 1 - **BLANCHARD NO. 18 36" ROTARY SURFACE GRINDER**, S/N 9170, 36" Electromagnetic Chuck, 20" Segmented Grinding Wheel, Electro-Matic Neutrofier Chuck Control, Chuck Speeds 6 to 33 RPM, Dresser, Coolant System
- 1 - **REID NO. 2C 6" X 18" HAND FEED SURFACE GRINDER**, S/N 6146, Brown & Sharpe 6" X 18" Permanent Magnetic Chuck, 1-HP Motor

VERTICAL RAM-TYPE EDM

- 1 - **ELOX TYPE 12-3816DR VERTICAL RAM-TYPE EDM**, S/N 093207, Tank Size 25" X 53" X 14"D, Table Size 16" X 37-1/2", Ram Size 6" X 6-1/2", Elox Astra 200D 200-Amp Dual Power Supply, S/N 020541, 1-1/2-HP Hydraulic Unit, Coolant System

LATHES

- 1 - **AMERICAN 24" M.P. 33" X 108" C.C. QUICK CHANGE GEARED HEAD LATHE**, S/N 51034, Spindle Speeds 8.6 to 300 RPM, Feeds .008 to .448 IPR, Threads 1 to 56 TPI, Hole Thru Spindle 2", 4" Head & Tailstock Risers
- 1 - **HARRISON MODEL M400 16" X 40" C.C. QUICK CHANGE GEARED HEAD LATHE**, S/N 403385-3657, Actual Swing 17", Spindle Speeds 40 to 2000 RPM, Feeds .0016 to .028 IPR, Threads 2 to 72 TPI, Hole Thru Spindle 2-11/16", Hydraulic Tracing Unit With Hydraulic Unit, Thread Chasing Dial, Micrometer Stop

HYDRO-TEL

- 1 - **CINCINNATI EM 28" X 60" VERTICAL HYDRO-TEL TRACER MILLING MACHINE**, S/N 1H3V1Y-25, Table Size 28" X 97", Spindle Speeds 44 to 1100 RPM, 180° Hydraulic Tracing Head Attachment, Coolant System

VERTICAL DUPLICATING MILLING MACHINES

- 1 - **BRIDGEPORT 4-SPINDLE VERTICAL T-RAM DUPLICATING MILLING MACHINE**, S/N 049, Table Size 9" X 68", (3) Bridgeport Series I 2-HP Variable Speed Milling Heads, Spindle Speeds 60 to 4200 RPM, (1) Bridgeport 1-1/2-HP Variable Speed Milling Head, Spindle Speeds 60 to 4200 RPM, Hydraulic Longitudinal, Cross, & Knee Feeds, Bridgeport Con-Trol-Scan Hydraulic Tracing Head Attachment, With 3-HP Hydraulic Unit
- 1 - **BRIDGEPORT 1-1/2-HP VARIABLE SPEED VERTICAL T-RAM DUPLICATING MILLING MACHINE**, S/N 139060, Table Size 9" X 48", Spindle Speeds 60 to 4200 RPM, Hydraulic Longitudinal, Cross, & Knee Feeds, True-Trace Synchro-Trace II Hydraulic Tracing Attachment, 1-1/2-HP Hydraulic Unit

RADIAL DRILL

- 1 - **CINCINNATI-BICKFORD NO. 1R 3-1/2" X 8" COLUMN RADIAL DRILL**, S/N 1R1856, Base Size 30" X 40", Spindle Speeds 150 to 3000 RPM, Feeds .004 to .020 IPR, Power Elevation & Clamping, 3-HP Spindle Motor, 18" X 18" X 18" Plain Box Table

BAND SAWS

- 1 - **DOALL MODEL C-70 AUTOMATIC HORIZONTAL METAL CUTOFF BAND SAW**, S/N N/A, Capacity 13" X 20", Blade Speeds 0 to 350 FPM, Hydraulic Head & Stock Feeds, Hydraulic Clamping, Coolant System
- 1 - **ARMSTRONG-BLUM/MARVEL 8/M8/M9 18" UNIVERSAL METAL CUTTING BAND SAW**, S/N 810263, Table Size 33" X 42", Blade Speeds 26 to 272 FPM, 1.33-HP Motor, Coolant System
- 1 - **DOALL ML 16" VERTICAL CONTOUR METAL CUTTING BAND SAW**, S/N 458448, Table Size 24-1/2" X 25", Power Feed, Blade Speeds 50 to 1600 FPM, Blade Welder/Grinder

WELDERS

- 1 - **HOBART MODEL RC650RVS 650-AMP PORTABLE ARC WELDER**, S/N 85WS78869 (1985), With Wire Feeder
- 1 - **HOBART MODEL RC-500 500-AMP ARC WELDER**, S/N 20RT-8830, With Miller Wire Feeder & Cart
- 1 - **MILLER MODEL SRH-404 400-AMP DIRECT CURRENT ARC WELDING MACHINE**, S/N HE783421
- 1 - **MILLER 33A/BP 300-AMP AC/DC GAS TUNGSTEN-ARC WELDING POWER SOURCE**, S/N HK276145
- 2 - **MILLER MODEL 300-SP 300-AMP AC ARC WELDERS**, (1) PORTABLE, S/N P345696, (1) S/N P343263
- 1 - **MILLER CP-250TS 250-AMP CONSTANT POTENTIAL DC WELDING POWER SOURCE**, S/N JD660925, With Miller Millermatic 30-E Wire Feeder & Cart
- 1 - **MILLER MODEL SR-150-32 150-AMP DIRECT CURRENT WELDING MACHINE**, S/N HD670886

MISCELLANEOUS MACHINERY

- 1 - **ERIE PRESS SYSTEMS HYDRAULIC HORIZONTAL HAMMER**, S/N 81-0487
- 1 - **PORTABLE HYDRAULIC RECIPROCATING HAMMER**
- 1 - **JET MODEL JDP-20MF 20" FLOOR-TYPE DRILL**, S/N 7081095, Table Size 13-1/2" X 16"
- 1 - **ACE ACE-27195C 8" BENCH-TOP DRILL**, S/N 005001, Table Size 7-1/2" X 10"
- 1 - **LUCAS NO. 31 PRECISION TABLE-TYPE HORIZONTAL BORING, DRILLING & MILLING MACHINE**, S/N N/A

MACHINE ACCESSORIES

- 1 - **16" X 26" SUB-TABLE**
 - 1 - **RALMIKE 12" X 15" TILTING MILLING TABLE**
 - 1 - **ADVANCE 11" X 11" 4-WAY CROSS SLIDE ROTARY TABLE**
 - 2 - **HEAVY-DUTY SHAPER VISES**, (1) 15", (1) 12"
 - 1 - **BRIDGEPORT 6" MACHINE VISE**
- Lathe Tooling, Etc.

CMM

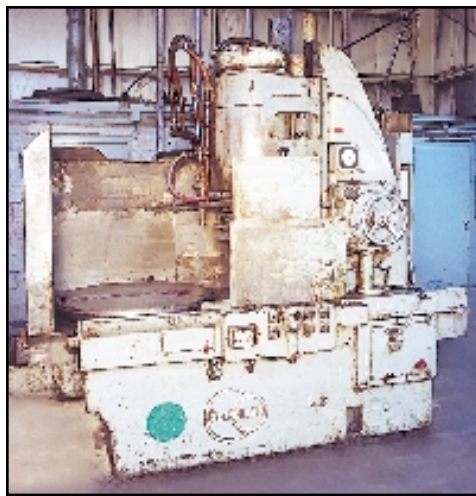
- 1 - **SHEFFIELD MEASUREMENT CORDAX MODEL 3000 HORIZONTAL ARM COORDINATE MEASURING MACHINE**, S/N 2-2188-0976 (REMANUFACTURED 1986), Table Size 26" X 37", Sheffield Measurement 4-Axis Measurement Processor, Hewlett Packard Personal Computer With Monitor & Printer, Renishaw TP1 Probe Head

INSPECTION EQUIPMENT

- 1 - **DETROIT MODEL PH2 HYDRAULIC BRINELL HARDNESS TESTER**, S/N 755, Foot-Pedal Control
 - 3 - **QUALITY MEASURING SYSTEMS GENESIS QA300 PROGRAMMABLE GAGE INTERFACING COMPUTERS**
 - 2 - **CAST IRON SURFACE PLATES**, (1) 36" X 73", (1) 18-1/2" X 27-1/2"
 - 4 - **DIGITAL HEIGHT GAGES**, (1) 20", (3) MITUTOYO 12"
 - 1 - **MITUTOYO 18" DIAL HEIGHT GAGE**
 - 3 - **MITUTOYO ABSOLUTE DIGIMATIC 8" DIGITAL CALIPERS**
 - 1 - **8" DIAL CALIPER**
 - 2 - **VERNIER CALIPERS**, (1) 40", (1) MITUTOYO 24"
 - 1 - **MITUTOYO DIGITAL DEPTH MICROMETER**
 - 3 - **MITUTOYO IDU25E DIGITAL INDICATORS**
 - 2 - **GAGE BLOCK SETS**, (1) MITUTOYO, (1) N/A
- Micrometers, Magnetic Base Indicator Stands, Magnetic V-Blocks, Angle Plates, Etc.

COOLING TOWERS

- 3 - **BALTIMORE AIRCOIL COOLING TOWERS**, (1) MODEL VXI-363, S/N 853471P, (2) MODEL VXC-58, S/Ns 830879P, 820262P



BLANCHARD NO. 18
36" ROTARY SURFACE GRINDER

FORKLIFTS

- 1 - CLARK 12,000-LB. CAPACITY GAS-POWERED FORKLIFT TRUCK, S/N N/A, Lift N/A, 8.25-15 Dual Front Pneumatic Tires, 8.25-15TR Rear Pneumatic Tires, Overhead Guard, Counterweight
- 1 - CATERPILLAR T70C 7000-LB. CAPACITY LPG FORKLIFT TRUCK, S/N 90M1405, Lift 170", Solid Tires, Overhead Guard, Mast Guard, Lights
- 1 - TOYOTA MODEL 5FG35 6800-LB. CAPACITY LPG FORKLIFT TRUCK, S/N 5FG35-20436, Lift 185", 3-Stage Mast, Cushion Tires, Overhead Guard, Mast Guard, Lights
- 1 - CATERPILLAR MODEL T60C 6000-LB. CAPACITY LPG FORKLIFT TRUCK, S/N 33L01224, Lift 170", Solid Tires, Overhead Guard, Lights
- 1 - KALMAR AC ACC-80 6000-LB. CAPACITY LPG FORKLIFT TRUCK, S/N 650152, Lift 97-1/2", 3-Stage Mast, 360° Rollover Attachment, Solid Tires, Overhead Guard, Lights
- 1 - CLARK CLARKLIFT MODEL C500-S60 5400-LB. CAPACITY LPG FORKLIFT TRUCK, S/N 355-899-3611, Lift 130", Side Shift, Solid Tires, Overhead Guard
- 1 - CLARK CLARKLIFT MODEL C500-55 4450-LB. CAPACITY LPG FORKLIFT TRUCK, S/N 355-511-3557, Lift 187", 3-Stage Mast, Sideshift, Solid Tires, Overhead Guard
- 1 - BAKER APPROXIMATELY 2000-LB. CAPACITY LPG FORKLIFT TRUCK, S/N N/A, Solid Tires, Overhead Guard, Lights

TRACTOR

- 1 - INTERNATIONAL-HARVESTER MODEL 444 GAS-POWERED TRACTOR, V/N N/A, 4-Speed Transmission, 8' Hydraulic Plow Blade, 13.6-28 Rear Tires, 7.50-16LT Smooth Front Tires, Overhead Guard, Lights

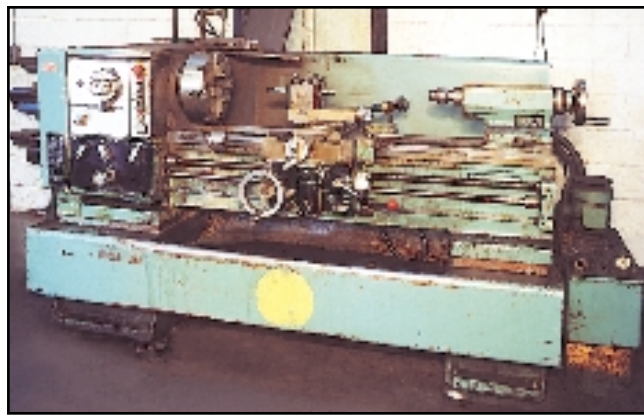
BRIDGE CRANES

- 1 - ROBBINS & MYERS 5-TON CAPACITY DOUBLE-GIRDER TOP-RUNNING TRAVELLING BRIDGE CRANE, Span 45-1/2', Top-Running Electric Cable Hoist, 6-Way Pendant Control
- 2 - ROBBINS & MYERS 3-TON CAPACITY SINGLE-GIRDER UNDERSLUNG TRAVELLING BRIDGE CRANES, Electric Cable Hoist, 6-Way Pendant Control, (1) With Span 45', (1) With Span 27-1/2'

STEEL BOXES

- 37 - STEELCRATE 4000-LB. CAPACITY STACKABLE CORRUGATED STEEL BOXES, Sizes 36" X 42" X 24"D
- 38 - STACKABLE CORRUGATED STEEL BOXES, (5) Size 32" X 32" X 18"D, (33) Size 36" X 48" X 24"D
- 4 - STACKABLE WIRE MESH SIDED STEEL STORAGE BOXES, Size 32" X 60" X 24"D

Large Quantity of Stackable Corrugated Steel Boxes, In Various Sizes



HARRISON MODEL M400 16" X 40" C.C.
QUICK CHANGE GEARED HEAD LATHE



BOTH 1996

LEROI WE200SSIIA
200-HP ROTARY SCREW
AIR COMPRESSORS

MATERIAL HANDLING EQUIPMENT

- 1 - GETMAN BROTHERS SL-1910 1000-LB. CAPACITY SELF-PROPELLED ELECTRIC SCISSOR-LIFT AERIAL WORK PLATFORM, S/N 977-09-058, Maximum Platform Height 19', Platform Size 34" X 68", Built-In Battery Charger
- 1 - HYDRAULIC VIBRATORY DRUM LOADER, Chamber Size 42" X 68" X 28"D, 5-HP Hydraulic Unit
- 1 - CUSTOM-FABRICATED 4' X 10-1/2' RAIL-MOUNTED BILLET TRANSFER CAR, With Motorized Cable Winch
- 1 - 3-TON CAPACITY 180° FREE-STANDING JIB CRANE, Jib Length 13'
- 1 - 1-TON CAPACITY 180° POST-MOUNTED JIB CRANE, Jib Length 15', CM 1-Ton Capacity Electric Chain Hoist
- 2 - 14' SPREADER BARS, (1) 5-TON CAPACITY, (1) 3-TON CAPACITY

AIR COMPRESSORS

- 2 - LEROI MODEL WE200SSIIA 200-HP ROTARY SCREW AIR COMPRESSORS, S/Ns 4219X176, 4219X175 (BOTH 1996), Skid-Mounted
- 2 - WORTHINGTON ROLLAIR 200 MODEL 1K-GTX-K9P2 200-HP ROTARY SCREW AIR COMPRESSORS, S/Ns 846-287, 846-415 (REBUILT 1993), Skid-Mounted
- 1 - INGERSOLL-RAND PAC-AIR 100 100-HP ROTARY SCREW AIR COMPRESSOR, S/N 77238U73-862 (1986)
- 1 - WORTHINGTON SIZE 6/64-1/2 X 2-3/4 30-HP HORIZONTAL TANK-MOUNTED AIR COMPRESSOR, S/N 876-317
- 1 - 15-HP HORIZONTAL TANK-MOUNTED AIR COMPRESSOR
- 1 - COMPRESSED AIR MANAGEMENT SYSTEM, Consisting of: (4) Pneumatech Model 4488 Drain Assemblies; Model CT-3000-150 Vertical Air Receiving Tank

Vertical Air Receiving Tanks

COMPUTER & OFFICE EQUIPMENT

- 5 - PERSONAL COMPUTERS, (2) COMPAQ DESKPRO PENTIUM, (2) AOPEN, (1) TRI-STAR
- 2 - HEWLETT-PACKARD LASERJET LASER PRINTERS, (1) 5L, (1) 4L
- 1 - HEWLETT-PACKARD DESKJET 694C INKJET PRINTER
- 1 - LUCENT/AT&T PARTNER II MODEL 103F16 PHONE SYSTEM, S/N 107085070
- 2 - XEROX COPIERS, (1) 5021, (1) 5314
- 2 - PLAIN PAPER FAX MACHINES, (1) PANASONIC PANAFAX PX-350 PRO LINE, (1) BROTHER INTELLIFAX 950M

Personal Computers, Dot Matrix Printers, Wood Desks, Wood Workstations, Wood Lateral Files, File Cabinets, Drafting Tables, Chairs, Refrigerators, Microwaves, Etc.



INTERNATIONAL-HARVESTER 444
GAS-POWERED TRACTOR

SHOP & FACTORY

- 1 - AALADIN MODEL 4135 PORTABLE OIL-FIRED HOT PRESSURE WASHER, S/N 68431
- 1 - R.P.S. FACTORY CAT 34 ELECTRIC WALK-BEHIND FLOOR SWEEPER, S/N 34-9936
- 1 - 10,000-LB. CAPACITY 72" X 96" IN-GROUND PLATFORM SCALE, With Toledo Scale Model 8582 50-Lb. Capacity Bench-Top Digital Counting Scale, S/N 2588495-2XS
- 1 - 54" X 76" PLATFORM SCALE
- 1 - GT-PAK MODEL DM-200 CUTTING TORCH UNIT, S/N 00317
- 1 - CUSTOM-FABRICATED DUAL RAM HYDRAULIC H-FRAME SHOP PRESS, With Hydraulic Unit
- 1 - 14" HEAVY-DUTY ABRASIVE CUTOFF SAW, Table Size 19" X 27"
- 1 - BALDOR NO. 102-1WD 8" DOUBLE-END PEDESTAL GRINDER, S/N F790
- 1 - 8" DOUBLE-END PEDESTAL GRINDER
- 1 - CLARK METALWORKER MODEL BT-1002 6" DOUBLE-END BENCH GRINDER, S/N 9426-4H0554
- 1 - BALDOR MODEL 23-899 6" DOUBLE-END PEDESTAL GRINDER
- 1 - ROCKWELL SERIES 31-520 6" VERTICAL BELT SANDER, S/N EZ-5241
- 1 - COMBINATION 6" BELT/12" DISC SANDER
- 1 - TORIT MODEL TD-486-HH5 DUST COLLECTOR, S/N J-4462
- 15 - SECTIONS OF HEAVY-DUTY STEEL DIE RACKING, Size 8-1/2'H X 7'W X 3'D

Box Stands, Heavy-Duty Fans, Crib Fencing, Self-Dumping Hoppers, Time Clock, Parts Washing Tank, Welding Table & Supplies, Oxy/Acetylene Cutting Torch Outfits, 2-Door Shop Cabinets, Perishable Tooling, Work Benches, Lockers, Spare & Replacement Parts, Die Racking, Battery Charger, Power, Pneumatic & Hand Tools; Bench Vises, Pigeon Hole Shelving, Forklift Barrel Clamping Attachment, Gear Reducers, Electric Chain Hoists, Motorized Belt Conveyors, Etc.

DoveBid Liquidation Sale

By order of the Secured Party, assets of

OGEMAW FORGE COMPANY

West Branch, Michigan

ASSETS OF A MAJOR FORGING FACILITY **IMMEDIATELY AVAILABLE**

(2) BLISS F-S1-1600-38-46 1600-TON SINGLE CRANK STRAIGHT SIDE FORGING PRESSES

S/N N/A (REBUILT 1997), C2283 (REBUILT 1998)

Bed Size 38"FB X 46"LR, Stroke 12", Shut Height 30", Speeds 70 SPM, Air Clutch, Air Counterbalance, Air Cushion, Bed & Ram Knockouts, 100-HP AC Motor Drive (Rebuilt 1997), S/N C2283, With Lubrimation Die Lubrication System

BLISS OBI-150 150-TON GEARED OBI PRESS

S/N H49669-H36276, Bed Size 30"FB X 50"LR, Ram Size 24"FB X 34"LR, Stroke 8", Shut Height 24", Slide Adjustment 4", Air Clutch, Hydraulic Parts Chute, Palm Button Control, 1" Bolster Plate

AMERICAN INDUCTION HEATING 600-KW CONVEYORIZED INDUCTION BILLET HEATING SYSTEM

(REBUILT 1996-97)

With Tech Induction Induction Heating Unit, Opening Size 4" X 4", Length 72", Ircon Mirage Digital Control, Allen-Bradley Digital Speed Control, Billet Loader

INDUSTRIAL HEATING SYSTEMS 800-KW 3-ZONE CONVEYORIZED INDUCTION BILLET HEATING SYSTEM

(REBUILT 1997)

Induction Heating Unit, Opening 4" X 4", Length 9', Lepel/PPS Control, Allen-Bradley Digital Speed Control, Billet Loader

(4) FRANKLIN GAS-FIRED SLOT FURNACES

All With Digital Temperature Controllers

HILL-ACME BILLET SHEAR

Opening Size 12" X 36", 20-HP Motor, With 30'L Bar Loader With 5-HP Motor & Hydraulic Loading Arm

BUFFALO FORGE MODEL 150 MECHANICAL BILLET SHEAR

S/N 69-U-8282, Billet Capacity 1-1/2", Air Clutch, Hydraulic Stock Stop, Holddown, Inclined Billet Feed Table With Gravity Feed Rollers, Motorized Incline Belt Conveyor, Foot-Pedal Control

LEROI MODEL WE200SSIIA 200-HP ROTARY SCREW AIR COMPRESSOR

(1996) Skid-Mounted

Items subject to prior sale.

For further information and inspection arrangements,
please contact **Mike Pitts** in our Chicago Office at
Phone: **847-520-0040, Ext. 604** • Fax: **847-520-0707**
e-mail: **mpitts@dovebid.com**
www.dovebid.com

DoveBid, DoveBid.com, and the DoveBid logo are trademarks of DoveBid, Inc.
1241 East Hillside Blvd. • Foster City, CA 94404
Fax 650.572.1502 • CA Bond# 57BSBA17624

DOVEBID™
Business Auctions Worldwide

If you have received this fax in error or would like to be removed from our distribution list, please mark your fax number clearly and fax back to 888.818.0263 or 650.572.1502 or send an e-mail to reply@dovebid.com with the fax number you want removed.